

1. Product specification

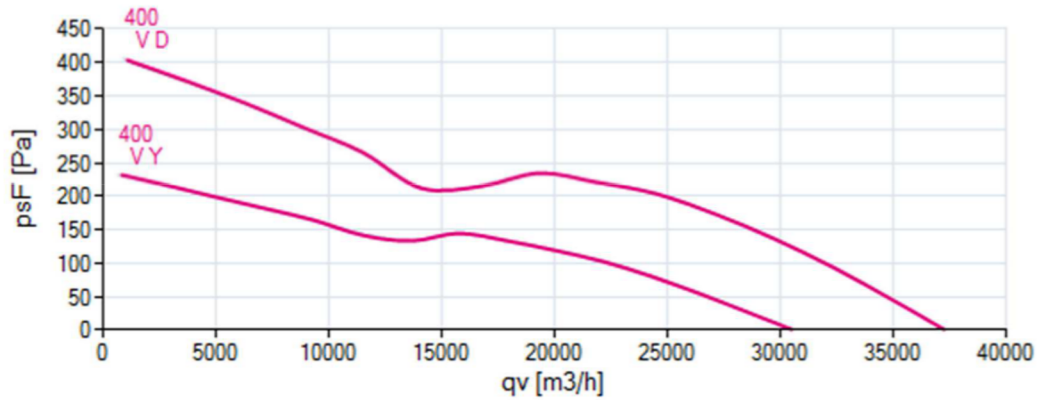
Technical data

Article number	209589
Type	FC091-SDS.7Q.V7
Designation	Axial fan with diecast blades
Rated values	3~400V±10% D/Y 50Hz P ₁ 3.60/2.50kW 7.20/ 4.30A ΔI=5% 890/ 700/min COSY 0,72 60°C
Electrical connection	Terminal box K07
Min. operating temperature °C	-40
Mounting type terminal box	Mounted on Stator
Type of protection	IP54
Thermal class	THCL155
Connection diagram	1360-108XA
Rating plate	1x fixed
Fitting position	H/Vu/Vo
Motor protection	thermal contact
Impregnation	Moisture and hot climate protection
Quality of bearings	ball bearing with long-time lubrication
Material Rotor	Aluminium
Painting rotor colour rotor	Rotor 1 coat painted RAL 9005 (jet black)
Material blades	Aluminium
Painting impeller Colour blades	1 coat painted RAL 9005 (jet black)
Painting mot.suspens colour suspension	Motor suspension 1 coat paint RAL 9005 (jet black)
Weight kg	53,05
ErP Data	Efficiency η_{statA} : 38.3 % Efficiency: $N_{actual} = 41.2 / N_{target} = 40^*$ *ErP 2015

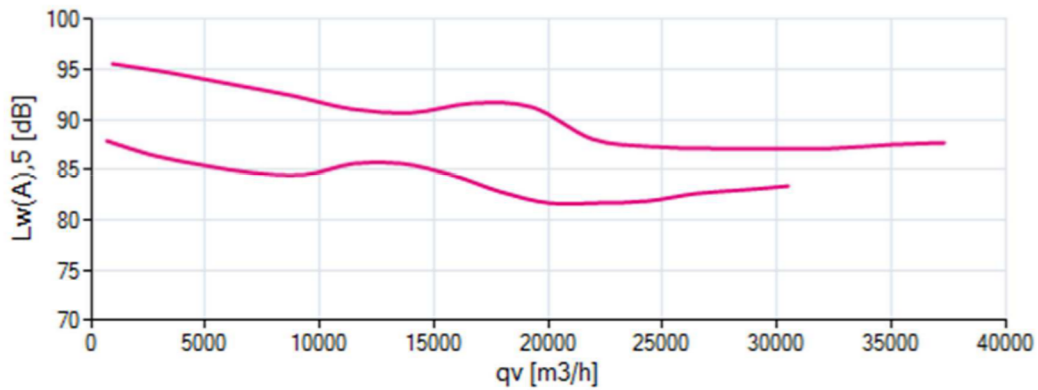


2. Characteristic Curve

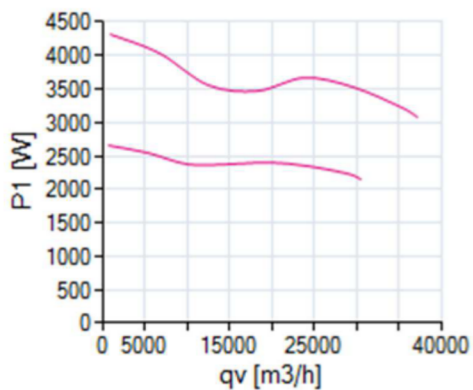
Air performance



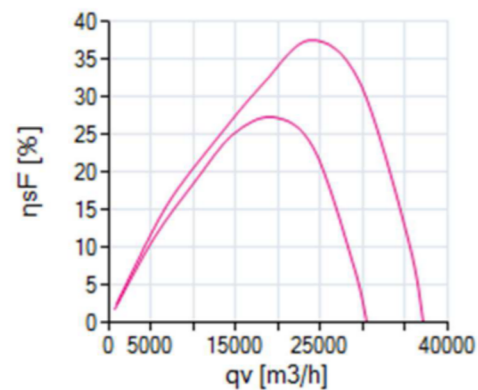
Acoustics



Power input



Efficiency

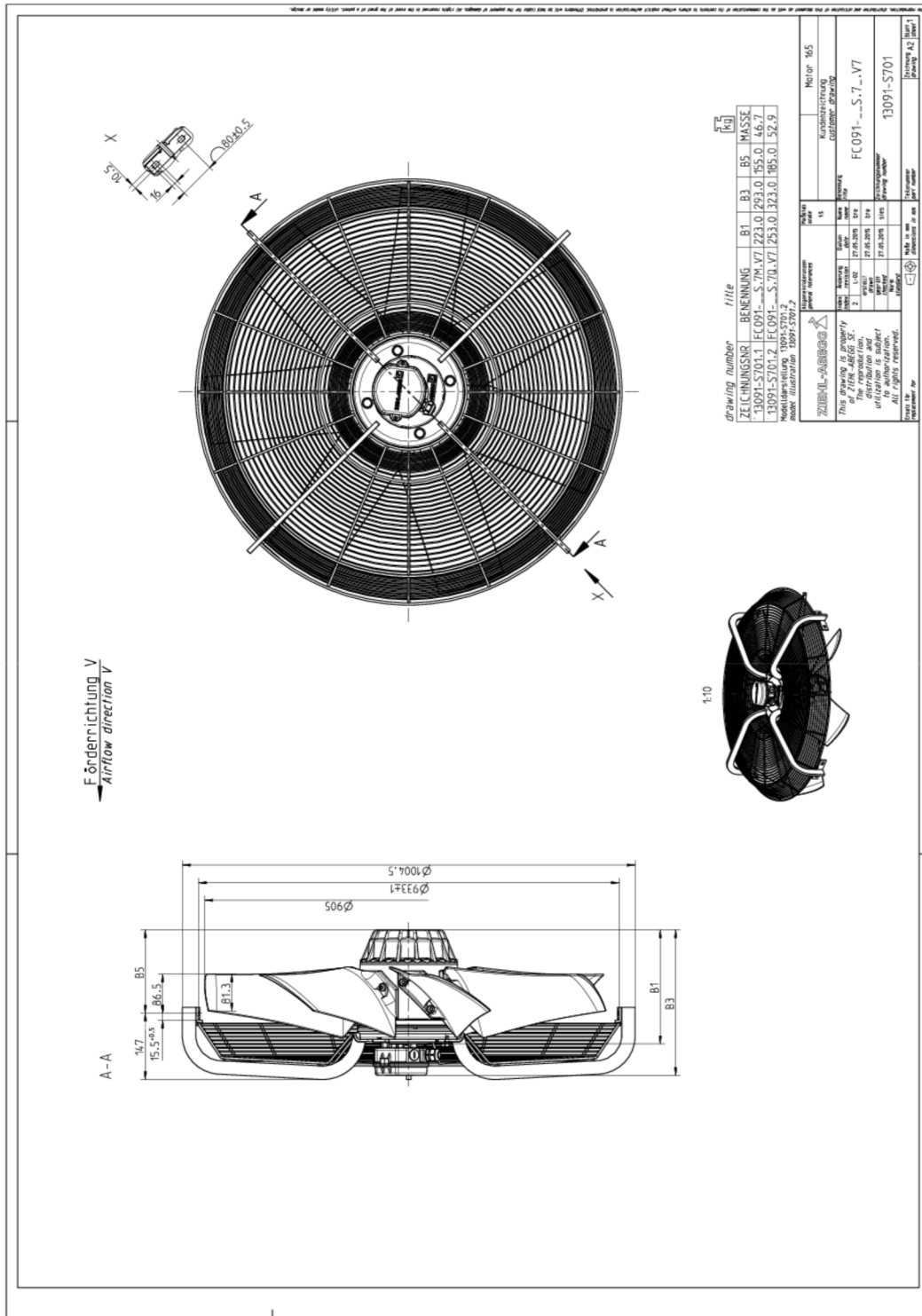


měřeno v plném hrdle bez mřížky, instalace typ A podle ISO 5801

Please note: It's not allowed to use this fan in the stall area!*

*In doubt please ask your responsible ZIEHL-ABEGG sales contact.

3. Drawing



Dimensions in mm

Shown drawing is just to show the dimensions of the fan.

www.ziehl-abegg.com
9.2.2017 14:20:11

Movement by Perfection | Bewegung durch Perfektion



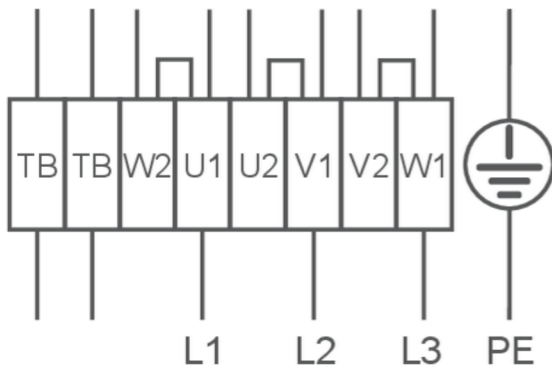
4. Connection diagram

1360-108XA

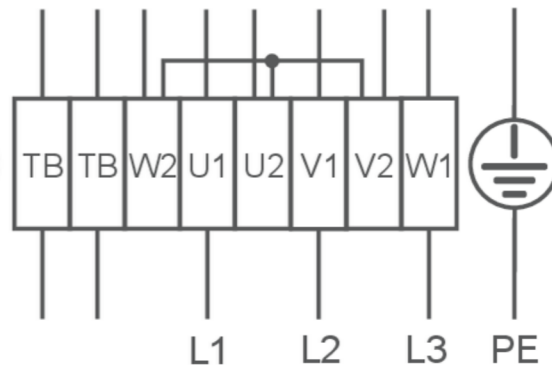
3~ motor, 2 speeds (Δ/Y switch over) with thermostatic switch (if built in). Without bridge when using speed change-over switch.

U1	brown
V1	blue
W1	black
U2	red
V2	grey
W2	orange
TB	white

High speed/D-connection



Low speed/Y-connection



5. EU-Declaration of conformity

EC-Declaration of conformity

- Translation -
(english)

ZA75-GB 1616 Index 011
00285644-GB

Manufacturer: ZIEHL-ABEGG SE
Heinz-Ziehl-Straße
74653 Künzelsau
Germany

The manufacturer is solely responsible for issuance of the declaration of conformity.

The products:

- External rotor motor MK., MW..
- Axial fan FA., FB., FC., FE., FF., FS., FT., FH., FL., FN., FV., DN., VR., VN., ZC., ZF., ZN..
- Centrifugal fan RA., RD., RE., RF., RG., RH., RK., RM., RR., RZ., GR., ER..
- Cross-flow fan QK., QR., QT., QG..

The engine type:

- Asynchronous internal or external rotor motor
- Asynchronous internal or external rotor motor with integrated frequency inverter, except EDP system
- Electronically commutated (EC) internal or external rotor motor
- Electronically commutated internal or external rotor motor with integrated EC Controller, except EDP system

These products comply with the following EU directives:

- EMC Directive 2014/30/EU
- Low voltage directive 2014/35/EU
- ErP Directive 2009/125/EC, in conjunction with Regulation (EU) no. 327/2011

The following harmonized standards are in use:

EN 60034-1:2010 + Cor.:2010

EN 61000-6-3:2007 + A1:2011 + AC:2012

EN 60204-1:2006 + A1:2009 + AC:2010

EN 61000-6-2:2005 + AC:2005

EN 60529:1991 + A1:2000 + A2:2013

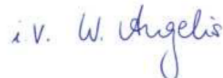
Compliance with the ErP Directive 2009/125/EC does not refer to external rotor motors MK., MW..

All ErP-relevant information comprises measurements which are determined using a standardised measurement set-up. More details can be obtained from the manufacturer.

Compliance with the EMC Directive 2014/30 / EU refers only to those products when they are connected by mounting / operating instructions . If these products are integrated into a system or supplemented with other components (eg. sensing controls) and operated , the manufacturer or operator is responsible of the overall system for compliance with the EMC Directive 2014/30 / EU .

Künzelsau, 20.04.2016
(Location, date of issue)

ZIEHL-ABEGG SE
Dr. W. Angelis
Technical Director Air Movement Division
(Name, Function)



(Signature)

ZIEHL-ABEGG 